

HQ RIP Version 10.0

Software RIP



HQ RIP

The RIP'ing solution that saves you time, money, and energy, while giving you outstanding quality

Screen's latest HQ RIP, based on the powerful Harlequin Rip Scriptworks interpreter, enables your output devices to achieve the highest possible level of image quality. It features all the advances of PostScript 3, as well as the speed, reliability, and quality required to match the performance of Screen's fastest recorders, including the advanced PlateRite series of platesetter.



RIP'ing Solution

Choose your system

The HQ RIP is supported by a wide range of flexible options that can be used with the RIP to make a system that suits the work you do and the way you do it. Several options enhance the RIP's functionality, including Multi-threading Performance, HQ Parallel Pages, Variable data Support, specialized color management, screening, trapping, and TIFF/IT-P1 output. Post-RIP imposition and in-RIP OPI are also possible. Purchase only the options you need, when you need them.

Choose your platform

Version 10.0 of the HQ RIP is available for Windows systems. It is compatible with Windows 2012 Server 64-bit, Windows 2008 Server R2 64-bit, Windows 8 64-bit, Windows 7 64-bit.

Performance

- Using multi-threading
Multi-threading is enabled using a layered set of passwords allowing a particular number of threads, and is designed to improve performance. It allows the RIP to take advantage of hyper threading and multi-core CPU architectures as well as multiple processors.
- HQ Parallel Pages™ (HPP)—(Interpreter/renderer/pipelining)
HQ RIP supports the interpretation of one page of a job while the previous page of the same job is being composited and/or rendered in one or more separate threads.

64-bit Binary

- Using a 64-bit RIP build aids performance in two ways:
 1. The compiled code can perform some steps in fewer cycles because of larger word sizes, thereby increasing the RIP speed by around 10%.
 2. Much larger address space.
- A 64-bit build can access all RAM installed in your computer.

Color

- Added new Pantone colors to the Pantone Plus Color Swatch

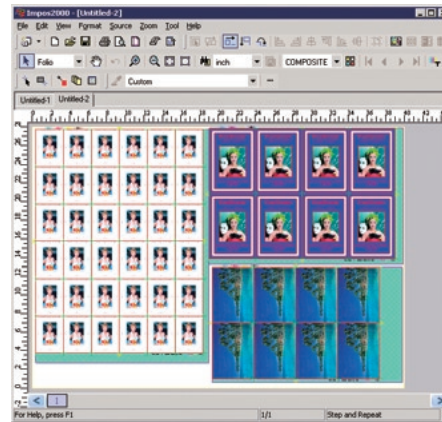
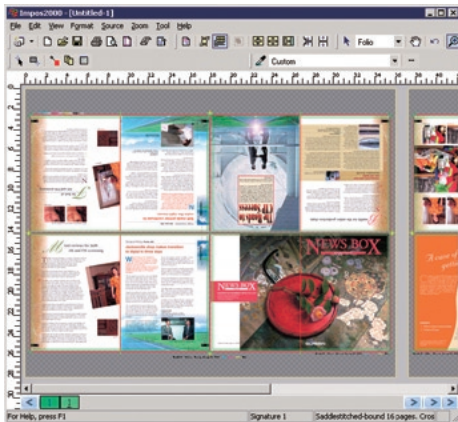
Variable Data Support

- Internal HVD (iHVD)

EP-B101 Connection

- Ethernet connectivity to device only

HQ RIP Components



impos2000 1-bit TIFF imposition continued

The **impos2000 Client software** has the following new features that allow users to:

- Automatically match back signatures to front signatures in Jumble mode.
- Divide perfect bound signatures into two partitions with different signature text and collation marks.
- Back up and restore images.
- Output a “.ply” file for completed flats, while excluding incomplete flats.
- Duplicate an image group in Jumble mode while preserving the images’ relative positions.
- Move image groups in Jumble mode.
- Eliminate accidental image movement in Jumble mode with the “Move Modifier” feature.
- Center multiple images in Jumble mode using a bounding box.
- Measure the distance between an image control point and another defined reference point in Jumble mode.
- Place images according to exact measurements in Jumble mode.
- Display the image file name, size, and location in Jumble mode using the “Template Attributes” mode.
- Use the improved and expanded Jumble mode invisible grid.
- Define the matrix of a package imposition in Jumble mode.
- Fold more than two pages together into one unit, then stack many units together, using the perfect bound method. This binding method is called “Wrap2.”
- Compensate for creep in Saddlestitch mode.
- Define sheet margins in relation to plate size.
- Define the starting signature number.
- Define page numbers in “Book” mode using the “Custom Page Number” feature.
- Group pages using the “Add Page Group” toolbar icon.
- Align images using the “Double-Burn” feature.
- Define custom mark status on selected signatures.
- Show a mirror collation mark on the back signature.
- Create check box custom marks.
- Create cross custom marks.
- Undo the last action performed.

PixelStream workflow (option)

The **PixelStream Workflow Solution** is a powerful and reliable system that combines all the elements of the digital prepress workflow into a single economical solution. It has everything required for trapping, imaging, rendering, and creating film or plates. Users can build up to this full workflow solution gradually by adding the desired optional modules.

The optional modules are:

- impos2000 imposition software
- TrapPro in-RIP trapping software
- DCS 2.0 plug-in software that creates DCS 2.0 files for use with halftone proofing devices in the output of color-accurate halftone proofs
- InkProof software that generates CIP3 Print Production Format (PPF) files
- Contone TIFF, which produces TIFF images that can be used in proofs (LabProof) or to “pass through” to other systems. The impos2000 Server is used to create the final Contone TIFF image, but output is performed on another system.
- Contone PDF
- Contone PS
- TIFF/IT-P1 Input
- SPEKTA2 Screening (2400/350/650)
- SPEKTA 2400 Screening (2400/300/400)
- SPEKTA 1200 Screening for Newspaper Market (1200/150/151/200/201)
- Harlequin Dispersed Screening (HDS)
- Harlequin Chain Screening (HCS)
- Harlequin Micro Screening (HMS)
- AlphaLogic Screening (ALS)
- CRS Screening
- ColorPro

PixelStream also is bundled with several imposition proofing plug-ins at no extra charge:

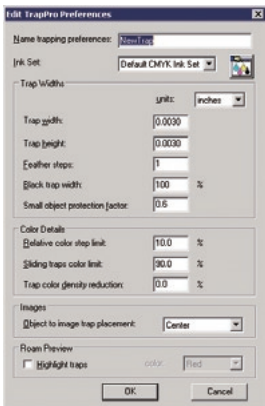
- A 1-bit TIFF output plug-in produces TIFF images from the impos2000 Server.

HQ RIP Components

HQ RIP

The HQ RIP uses the Harlequin™ ScriptWorks interpreter, which over the years has proven to be the fastest, most configurable RIP on the market. The HQ RIP is a high-performance PostScript-language-compatible raster image processor. It has a graphical user interface that is easy to use and it supports a wide variety of fonts and input formats. File formats include PostScript, EPS, HD Photo, XPS 1.0, TIFF 6.0, TIFF/IT-P1, JFIF, GIF, and JPEG. The HQ v10.0 RIP also supports Portable Document Format (PDF) 1.7 or earlier files, without first converting them to PostScript. It supports PDF 1.7 features, such as transparency, JBIG2, 128-bit encryption, and referenced PDF. It supports PDF/X-1a, PDF/X-3, PDF/X-4, PDF/X-4p, PDF/X-5g, PDF/X-5pg, PDF/VT, which permit a single file to be distributed to one or more locations as color-managed or CMYK data ready for final print.

TrapPro (option)

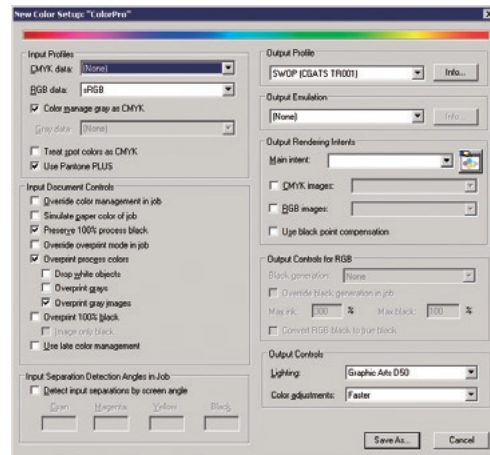


TrapPro is a trapping engine that includes the features top printers and publishers demanded, providing an improved feature set over previous trapping modules.

TrapPro is designed to trap jobs automatically. It provides in-RIP trapping that can be easily set up to accommodate different types of jobs or customers. Trap settings can be saved to reduce system time, improving both quality and trapped output.

ColorPro (option)

ColorPro is a full-feature color solution for the HQ RIP that ensures color quality and accuracy for proofing and emulation. ColorPro provides the largest realizable color gamuts for the final print market, and allows greater accuracy than would be possible using standard profiles.



TIFF/IT-P1 Input/Output (option)

The TIFF/IT-P1 output option can output PostScript or PDF files as TIFF/IT-P1.

CIP3 PPF (option)

The CIP3 PPF option increases efficiency by improving communications between prepress, press, and post-press using CIP3 Print Production Format (PPF) files. PPF files contain data acquired during the prepress stage of a print job that is used at the press stage to adjust ink keys more accurately.

SPEKTA, SPEKTA 1200, and SPEKTA2 Screening (option)

SPEKTA, SPEKTA 1200, and SPEKTA2 are halftone screening that incorporate AM/FM hybrid screening technology. This technology enables the strengths of both AM and FM screening methods to be implemented and combined for output on Screen's PlateRite series platesetters. Not only does SPEKTA/SPEKTA2 overcome moiré and broken lines, it also delivers print quality and detail comparable to that afforded by screen rulings of 300 lpi or greater.

Niagara Extra screening (option)

Niagara screening are specially designed for use with the PlateRite Niagara CTP and are divided into two groups: Standard and Extra. The standard screening are provided at no cost. The end-user may purchase Niagara Extra for additional screening that cover a variety of printing needs.

AlphaLogic Screening (option)

AlphaLogic Screening uses a halftoning algorithm to generate high-quality halftone screen output.

CRS Screening (option)

CRS produces screening without any banding.

Harlequin Chain Screening (HCS) (option)

Harlequin Chain Screening uses an elliptical dot shape to produce chain-like structures that are ideal for generating smooth flat tints and vignettes, even with comparatively low screen rulings.

Harlequin Dispersed Screening (HDS) (option)

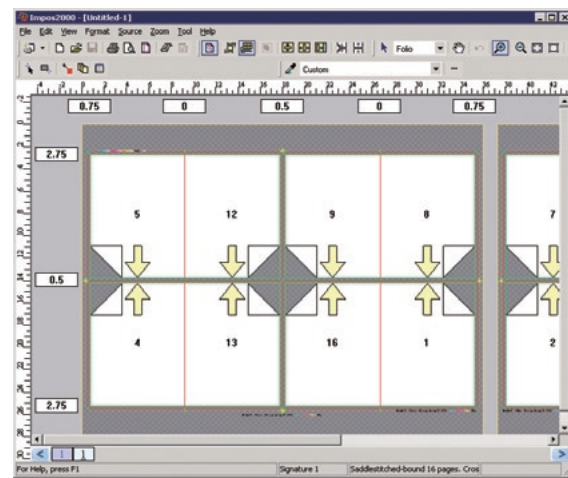
Harlequin Dispersed Screening is an FM or stochastic screening method known for its advantages in producing fine detail and eliminating the sources of moiré.

Harlequin Micro Screening (HMS) (option)

Harlequin Micro Screening is a screening method that uses a Respi screen structure to allow greater highlight gradation, even at high screen rulings.

impos2000 1-bit TIFF imposition (option)

impos2000 is a comprehensive, easy-to-use imposition software program that can be used for high-volume book work (sheet-wise imposition), step and repeat work, film optimization, and specialized color work. Throughout the various imposition steps, the user can view a color image of each page. This allows fast placement and easy visual



verification of each signature.

impos2000 allows all film, plate, cutting, folding, and stacking marks to be displayed. Custom marks can be centered along the edges of the signature or plate (Top-Center, Right-Center, Bottom-Center, and Left-Center), as well as at the corners and center of the signature or plate. impos2000 also enables single- and multi-page corrections to be made without reRIP'ing the whole job.

A rotation feature in the Client makes it easy to save film by rotating RIP'ed pages 90, 180, or 270 degrees to fit the maximum number of pages possible on the flat. A 90-degree rotation feature in the Server enables users to rotate flats 90 degrees counterclockwise (270 degrees) to match the output direction of the output device.

HQ RIP Specifications

Compatible Fonts	Type 0 (composite), Type 1, Compact Font Format (CFF/Type 2), Type 3, Type 4, Multiple Master, Type 32, Type 42, CID, TrueType
Input Languages	PostScript Language Levels 1, 2, and 3; PDF (up to v1.7); PDF/X-1a, PDF/X-3, PDF/X-4, PDF/X-4p, PDF/X-5g, PDF/X-5pg, PDF/VT; XPS; TIFF 6.0; TIFF/IT-P1 (optional); HD Photo; EPS; JPEG; JFIF; and GIF
Screening Methods	Harlequin Precision Screening™; Harlequin Dispersed Screening™ (optional); Harlequin Chain Screening™ (optional); Harlequin Micro Screening™ (optional); AlphaLogic Screening (optional); CRS (optional); SPEKTA, SPEKTA2, and SPEKTA 1200 (optional); and Niagara and Niagara Extra screening (optional)
Other Software Options	TrapPro, ColorPro, impos2000, CIP3 plug-in for PPF output, TIFF/IT-P1 output plug-in, InkProof, DCS 2.0, Contone TIFF, Media Saving, Multi-threading, HQ Parallel Pages (HPP), Variable Data Support

Hardware Specifications

HQ RIP	<p>CPU: A Pentium III 450 MHz or faster RAM: 1 GB or more, 4MB shared cache, 1,066 MHz Front Side bus or better Disk space: 74 GB (or more) 10,000 RPM SATA OS: Windows 2012 Server 64-bit, Windows 2008 Server R2 64-bit, Windows 8 64-bit, Windows 7 64-bit CD-ROM drive USB Port for Sentinel Security Dongle 100/1000 Gigabit Ethernet interface EP-B101 Ethernet Converter Box</p> <p>Note: SCSI device support was discontinued from version 8.1 going forward. This includes these devices: Katana-5040, Katana-5040-II, Katana-5055, Katana-5055-II, PF-R2055V1 and PF-R3051V1.</p>
---------------	---



SCREEN Graphic and Precision Solutions Co., Ltd.

HEAD OFFICE

• Teranouchi-agaru 4-chome, Horikawa-dori, Kamigyo-ku, Kyoto, 602-8585 Japan/Phone +81-75-414-7610/Fax +81-75-414-7608

DAINIPPON SCREEN GRAPHICS (USA), LLC

• 5110 Tollview Dr., Rolling Meadows, IL 60008, USA/Phone +1-847-870-7400/Fax +1-847-870-0149 www.screenusa.com

DAINIPPON SCREEN (DEUTSCHLAND) GmbH

• Mündelheimer Weg 39, 40472 Düsseldorf, Germany/Phone +49-211-472701/Fax +49-211-4727199

DAINIPPON SCREEN (NEDERLAND) B.V.

• Bouwerij 46, 1185 XX Amstelveen, Holland/Phone +31-20-4567800/Fax +31-20-4567805 www.screeneuropa.com

DAINIPPON SCREEN SINGAPORE PTE. LTD.

• 29, Kaki Bukit View, Kaki Bukit Techpark II, Singapore 415963/Phone +65-6749-3833/Fax +65-6749-9010 www.screenesp.com.sg

DAINIPPON SCREEN (CHINA) LTD.

• Room 2001 - 2003, 20/F Cable TV Tower 9 Hoi Shing Road Tsuen Wan, N.T. Hong Kong/Phone +852-2953-0038/Fax +852-2755-8683

Beijing office/Phone +86-10-6708-9271, 9272, 9273/Fax +86-10-6708-9395

Shanghai office/Phone +86-21-3126-5122/Fax +86-21-5218-2199

Guangzhou office/Phone +86-20-3891-1112/Fax +86-20-3891-1036

DAINIPPON SCREEN (TAIWAN) CO., LTD.

• 4F No. 126-1, Ming Tsu West Rd., Taipei, Taiwan/Phone +886-2-25862711/Fax +886-2-25914367

DAINIPPON SCREEN (KOREA) CO., LTD.

• 10th, Yonsei Bongsae B/D 46-3, 1Ga, Bongsae-Dong, Joong-Gu, Seoul 100-161, Korea/Phone +82-2-7766-786/Fax +82-2-7766-787

DAINIPPON SCREEN (AUSTRALIA) PTY. LTD.

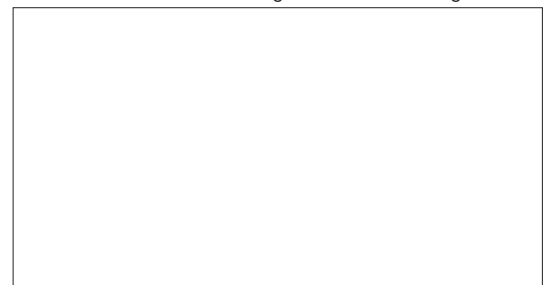
• Suite 11, 2 Eden, Park Drive, Macquarie, NSW2133, Australia/Phone +61-2-9016-3400/Fax +61-2-9016-3425

Internet web site : www.screen.co.jp/eng/gp

www.screenusa.com

www.screeneuropa.com

- This brochure was made using SPEKTA 2 screening.



We reserve the right to alter product design and specifications without prior notice.

No.202-188A Printed in Japan 11-14 010PSI(R2-4)